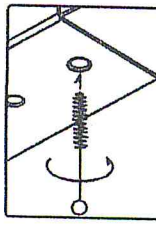




1987-01 JEEP CHEROKEE TRAILER HITCH

Parts List			
ITEM	QTY	PART NUMBER	DESCRIPTION
1	8	1/2"	FISHWIRE TOOL
2	8	600086	NUT, HEX FLANGE, 1/2-13
3	6	600098	WASHER, FLAT, USS, 1/2"
4	6	600104	BOLT, CARRIAGE, 1/2"-13x1.3/4"
5	6	600105	SPACER, SQUARE, CHRYSLER
6	8	600111	BOLT, HEX, M12-1.75x45, CHRYSLER
7	9	600114	1/2" LOCK WASHER
8	2	600121	BOLT, HEX, 1/2-13 X 1 3/4
9	2	600122	.188 x 1.25 x 1.50" ROUND HOLE SPACER

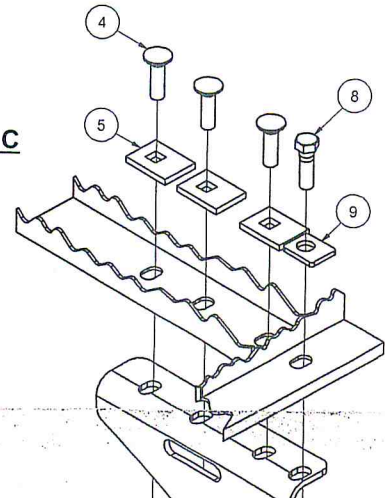
TOOLS REQUIRED
SOCKET WRENCH
5/8" SOCKET
3/4" SOCKET
TORQUE WRENCH



WELDNUT CLEANING

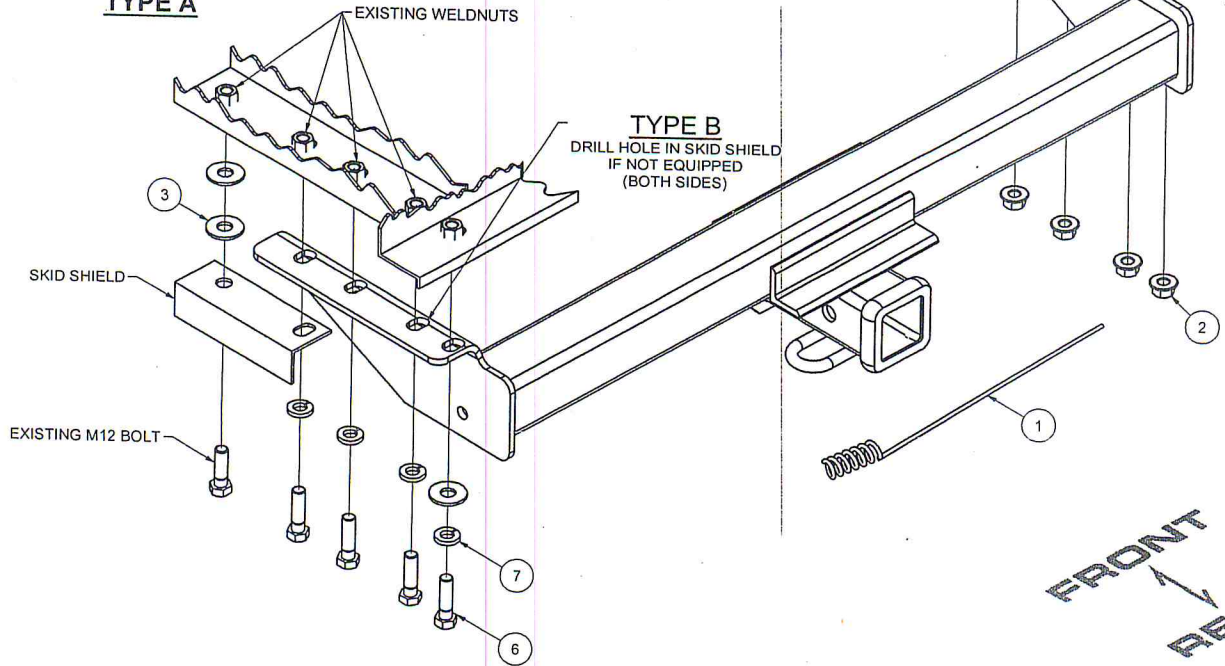
To remove debris from weldnuts in frame, spray lubricant or compressed air into hole. For heavy debris, use a small wire brush. (Be careful not to damage threads).

TYPE C
TYPE D



TYPE A

TYPE B
DRILL HOLE IN SKID SHIELD IF NOT EQUIPPED (BOTH SIDES)



INSTALLATION INSTRUCTIONS:

- 1) Remove all but a thin layer of undercoating from attaching surfaces. Also, grind or chisel off small aluminum rivet heads if present on attaching surface. This will ensure side brackets will sit flat against the frame.
- 2) - **Type A** - For vehicles equipped with frame mounted, closed sided, steel skid shield:
 - A. Remove the rear skid shield mounting bolt and loosen the forward skid shield mounting bolt on each side so that the skid shield is lowered about 1/4". **NOTE: DO NOT** remove the forward mounting bolt at this time or the skid shield will come off.
 - B. Raise the hitch into position, putting the receiver flange between the frame and the skid shield.
 - C. Install four M12 bolts and conical washers on each side as shown. (fishwire bolts and spacers through end of frame rail and install flange nuts if weld nuts are not present, may require loosening of bumper bolts)
 - D. Remove the forward skid shield mounting bolts. Place two 1/2" flat washers as spacers between the frame and the skid shield and reinstall the existing M12 fastener.
- **Type B** - 1997 and newer vehicles with frame mounted, closed sided, steel skid shield:
 - A. Remove the rear skid shield bolts on both sides, and drill hole as shown through skid shield.
NOTE: be careful not to damage weld nuts in frame rails.
 - B. Raise hitch into position placing hitch over the skid shield flanges and install the existing (4) M12 fasteners on each side.
- **Type C** - For vehicles equipped with frame mounted tow hook bracket on driver's side:
 - A. Remove the tow hook and the tow hook bracket. Mount the driver and passenger sides with spacers, fishwired bolts and flanged nuts as shown.
- **Type D** - For vehicles NOT equipped with frame mounted, closed sided, steel skid shield or frame mounted tow hook:
 - A. Fishwire the square hole spacers, round spacers and the 1/2" X 1 3/4" carriage bolts through the end of the frame and into existing holes. The 1/2" hex bolts will be pulled through the round hole spacers. Leave the fishwires attached to the carriage bolts until the 1/2" flange nuts are installed. This allows the bolts to be pulled through the receiver after it has been positioned around the fuel tank.
NOTE: Removal of bumper may ease the fishwiring process
- 3) Torque all 1/2" fasteners to 110 lb.-ft. (149 N•m) and all M12 fasteners to 79 lb.-ft (107 N•m).